

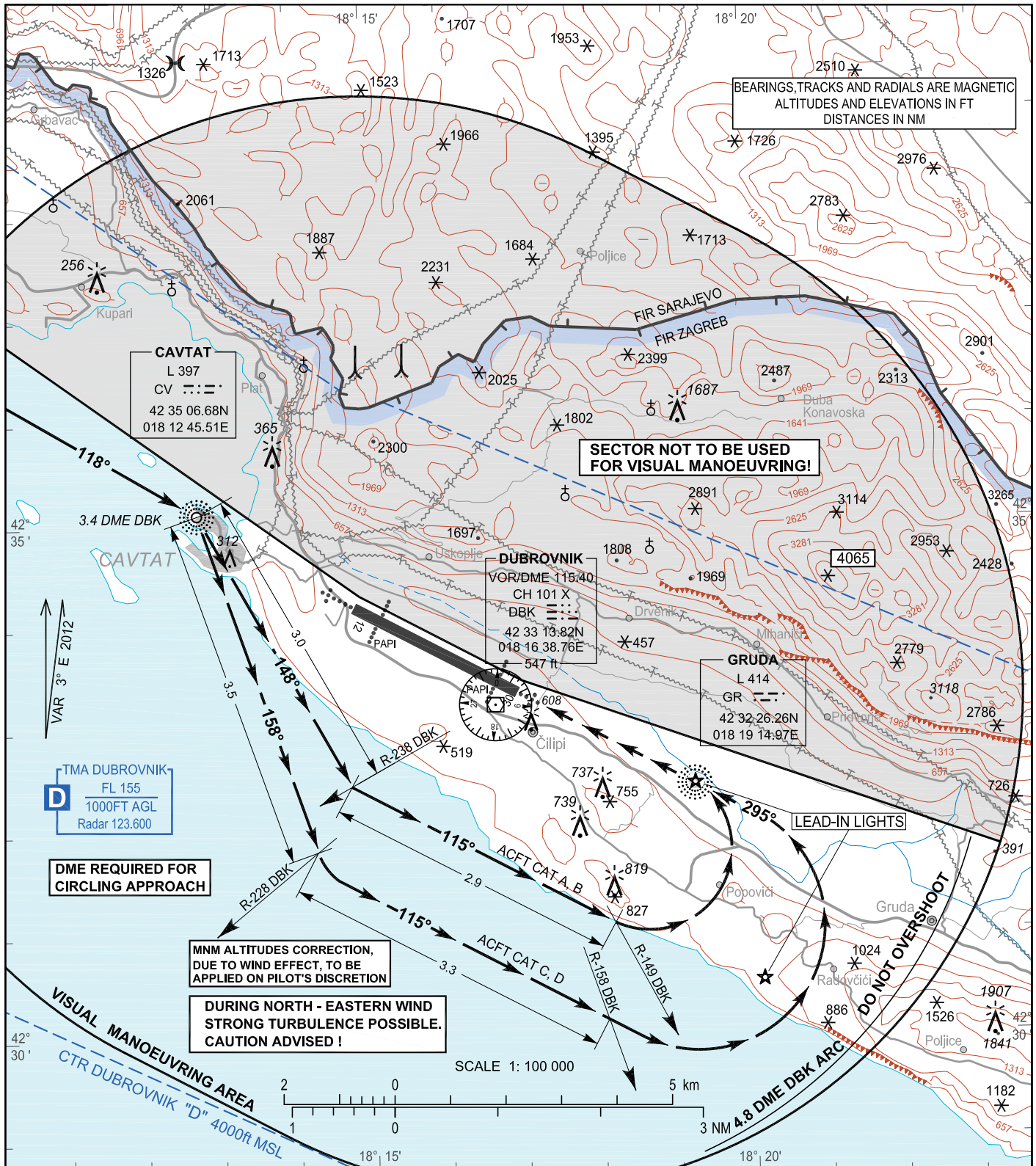
VISUAL MANOEUVRING- CIRCLING  
WITH PRESCRIBED TRACKS CHART (IFR)

AD ELEV 527  
HEIGHTS RELATED  
TO AD ELEV 527

Radar	123.600
TWR	129.500

DUBROVNIK / Čilipi  
CROATIA

Circling with prescribed tracks RWY 30



OCA(H)	A	B	C	D
Circling ILS LOC only	1300 (773)		2170 (1643)	
Circling VOR	2170 (1643)			
Circling L	2300 (1773)			

NOTE: Circling night and NE of aerodrome NA

**CIRCLING PROCEDURE:**  
Execute a published instrument approach procedure to circling OCA(H) for relevant ACFT CAT, proceed VISUALLY onto tracks and distances given on the chart above.

**MISSED APPROACH PROCEDURE WHILE CIRCLING:**  
If visual reference is lost before R - 183 DBK intercept R - 183 DBK climbing to 15.0 DME DBK and hold.  
If visual reference is lost after R - 183 DBK turn left inbound DBK VOR DME intercept R - 183 DBK climbing to 15.0 DME DBK and hold.

CHANGE: CV L coordinate.

OVA STRANICA JE NAMJERNO OSTAVLJENA PRAZNA  
THIS PAGE INTENTIONALLY LEFT BLANK