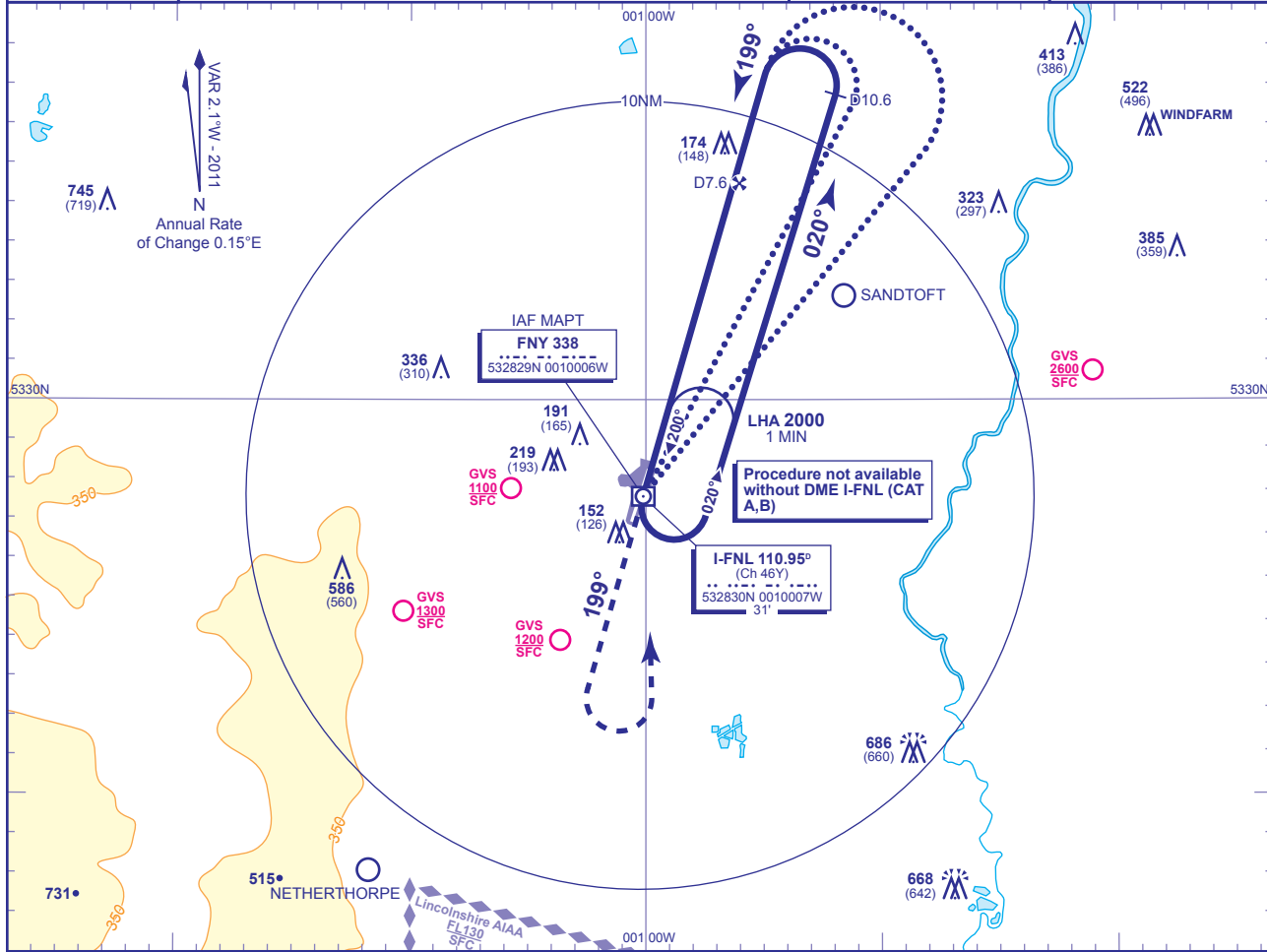


INSTRUMENT APPROACH CHART - ICAO

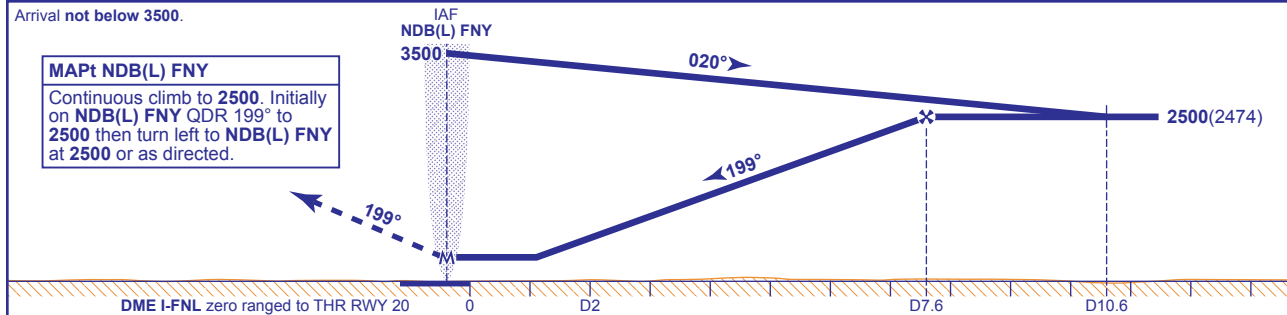
DONCASTER SHEFFIELD
NDB(L)/DME
RWY 20
 (ACFT CAT A,B,C,D)

	APP 126.225	DONCASTER APPROACH	AD ELEVATION 55	TRANSITION ALTITUDE 5000
	TWR 128.775	DONCASTER TOWER	THR ELEVATION 26	
	RAD 126.225, 129.050	DONCASTER RADAR	OBSTACLE ELEVATION 745 AMSL (719) (ABOVE THR)	
	ATIS 134.950	DONCASTER INFORMATION	BEARINGS ARE MAGNETIC	



RECOMMENDED PROFILE Gradient 5.25%, 319FT/NM

DME I-FNL	7	6	5	4	3	2	1
ALT(HGT)	2310(2284)	1990(1964)	1670(1644)	1350(1324)	1030(1004)	720(694)	400(374)



Aircraft Category	DME I-FNL zero ranged to THR RWY 20				Rate of descent	G/S KT				
	A	B	C	D		FT/MIN	160	140	120	100
OCA (OCH)	400(374)	400(374)	400(374)	400(374)	850	740	640	530	430	
NO DME	N/A	N/A	530(504)	530(504)						
VM(C)OCA (OCH AAL)	480(425)	520(465)	760(705)	760(705)						

ALTERNATIVE PROCEDURE From overhead NDB(L) FNY (IAF) not below 3500(3474) fly outbound on NDB(L) QDR 029° (CAT A,B) or NDB(L) QDR 043° (CAT C,D) descending to 2500(2474). At I-FNL D10.6 turn left to establish on the FAT then continue as for main procedure.

AIRCRAFT UNABLE TO RECEIVE DME I-FNL Advise ATC. Substitute timing for DME, flying outbound on racetrack or baseturn initial approach for 2.5 MIN (CAT C,D) before turning left to intercept the FAT. **Note: Timing option not available to CAT A,B.**

- NOTE**
- Aircraft will normally be required to hold not lower than 3500. Lowest altitude to commence procedure from hold is 2500.
 - Some procedures described on this chart have OCA(H) minima higher than the VM(C) minima shown in this table.
 - FAT is offset 0.8° from the RWY C/L.
 - CAUTION: Pilots of inbound traffic to note proximity of Sandtoft aerodrome to instrument approach procedures.

CHANGE: MAG VAR. PAGE NUMBER.