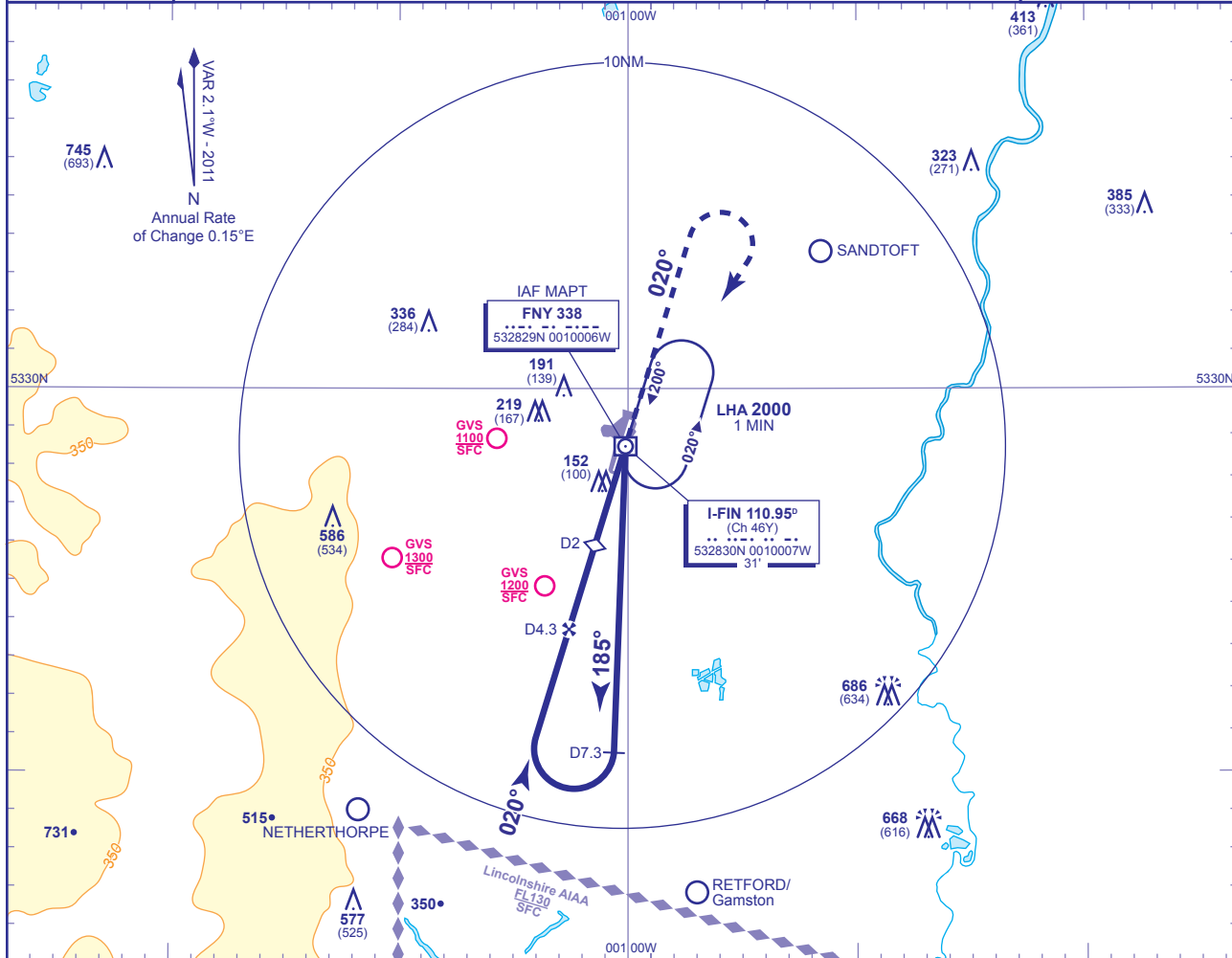


INSTRUMENT APPROACH CHART - ICAO

DONCASTER SHEFFIELD

NDB(L)/DME Z
RWY 02
(ACFT CAT A,B)

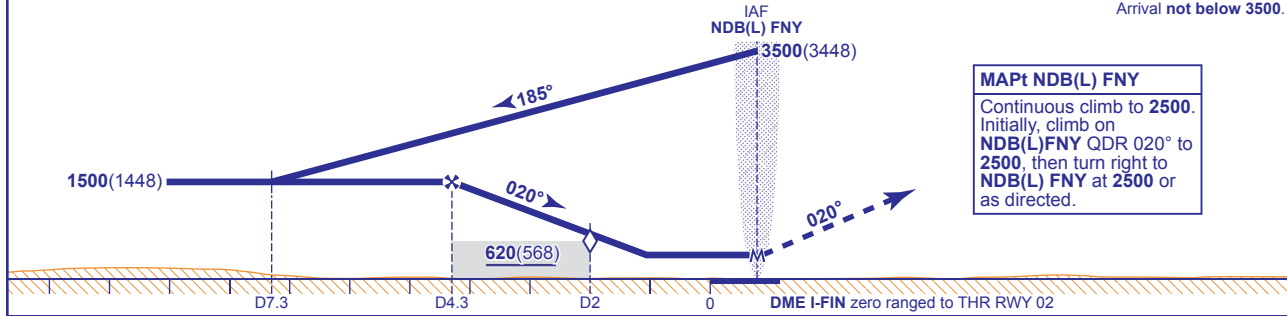
	APP 126.225	DONCASTER APPROACH	AD ELEVATION 55
	TWR 128.775	DONCASTER TOWER	THR ELEVATION 52
	RAD 126.225, 129.050	DONCASTER RADAR	OBSTACLE ELEVATION 745 AMSL (693) (ABOVE THR)
	ATIS 134.950	DONCASTER INFORMATION	BEARINGS ARE MAGNETIC
			TRANSITION ALTITUDE 5000



RECOMMENDED PROFILE Gradient 5.4%, 325FT/NM

DME I-FIN	4	3	2 (SDF)	1
ALT(HGT)	1400(1348)	1080(1028)	750(698)	430(378)

Arrival not below 3500.



MAPt NDB(L) FNY
Continuous climb to 2500. Initially, climb on NDB(L)FNY QDR 020° to 2500, then turn right to NDB(L) FNY at 2500 or as directed.

Aircraft Category	A	B	Rate of descent	G/S KT	160	140	120	100	80
	OCA (OCH)			FT/MIN	870	760	650	540	430
VM(C)OCA (OCH AAL)	Total Area (See note 2)								
	480(425)	520(465)							

AIRCRAFT UNABLE TO RECEIVE DME I-FIN
Notify ATC. Fly outbound for 2.5 MIN on track 185° then turn right to establish on the FAT. Once established, descend to MDA(H).

- NOTE 1 Aircraft will normally be required to hold not lower than 3500. Lowest altitude to commence procedure from hold after missed approach is 2500.
- NOTE 2 Some procedures described on this chart have OCA(H) minima higher than the VM(C) minima shown in this table.
- NOTE 3 CAUTION: Pilots of inbound traffic to note proximity of Retford/Gamston, Netherthorpe and Sandtoft aerodromes to instrument approach procedures.

CHANGE: MAG VAR. PAGE NUMBER.