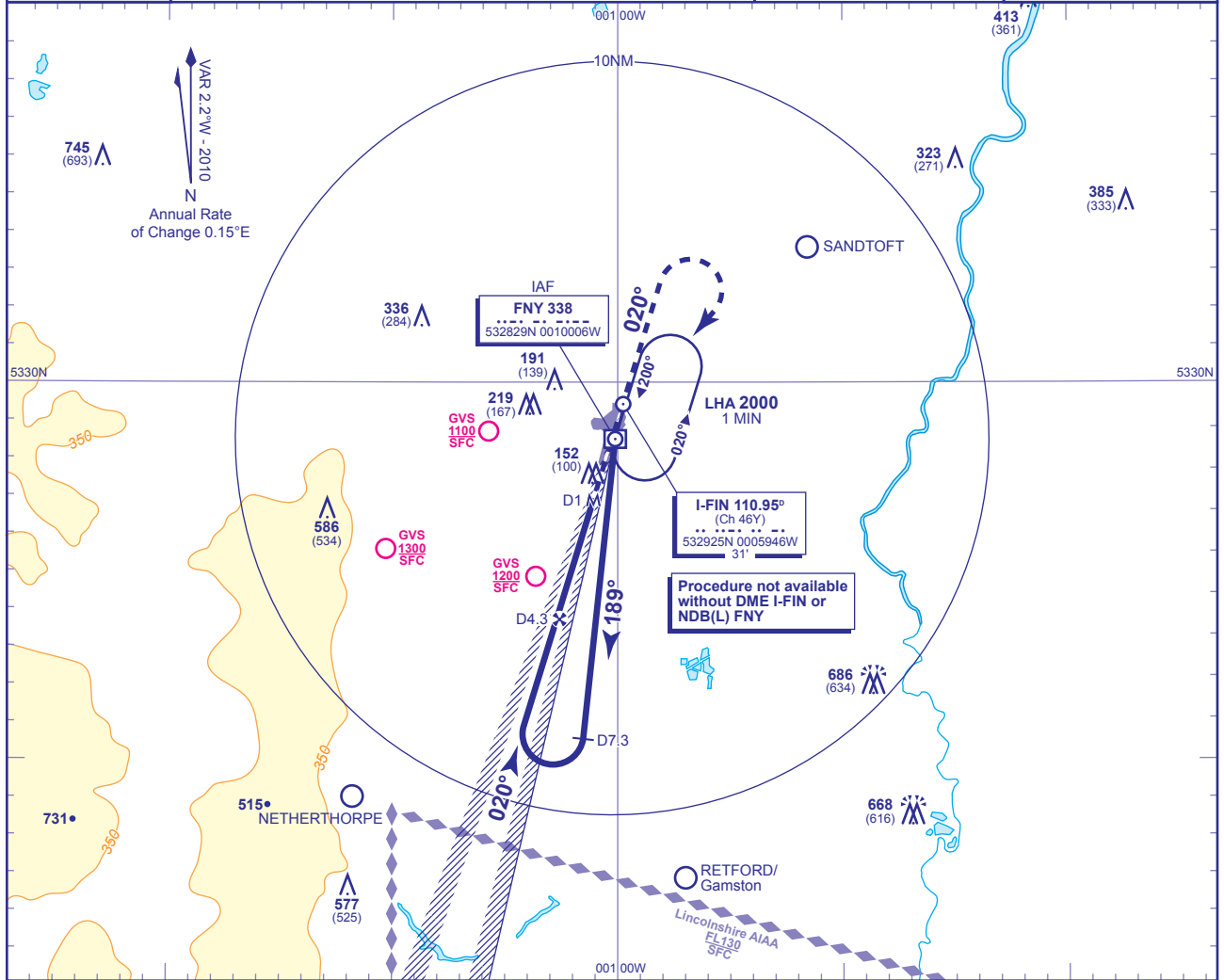


INSTRUMENT APPROACH CHART - ICAO

DONCASTER SHEFFIELD

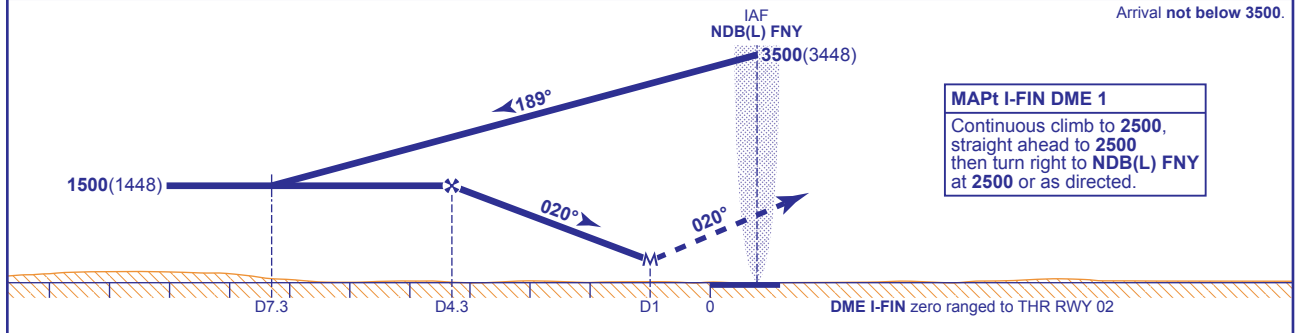
**LOC/DME Z
RWY 02**
(ACFT CAT A,B)

	APP 126.225	DONCASTER APPROACH	AD ELEVATION 55	TRANSITION ALTITUDE 5000
	TWR 128.775	DONCASTER TOWER	THR ELEVATION 52	
	RAD 126.225, 129.050	DONCASTER RADAR	OBSTACLE ELEVATION 745 AMSL (693) (ABOVE THR)	
	ATIS 134.950	DONCASTER INFORMATION	BEARINGS ARE MAGNETIC	



RECOMMENDED PROFILE Gradient 5.4%, 325FT/NM

DME I-FIN	4	3	2	1
ALT(HGT)	1420(1368)	1090(1038)	760(708)	430(378)



Aircraft Category		A	B	Rate of descent	G/S KT	160	140	120	100	80
OCA (OCH)	Procedure	430(378)	430(378)		FT/MIN	870	760	650	540	430
VM(C)OCA (OCH AAL)	Total Area	480(425)	520(465)							

NOTE 1 Aircraft will normally be required to hold not lower than 3500. Lowest altitude to commence procedure from hold after missed approach is 2500.
2 CAUTION: Pilots of inbound traffic to note proximity of Retford/Gamston, Netherthorpe and Sandtoft aerodromes to instrument approach procedures.

CHANGE: NOTE.

AERO INFO DATE 06 AUG 10